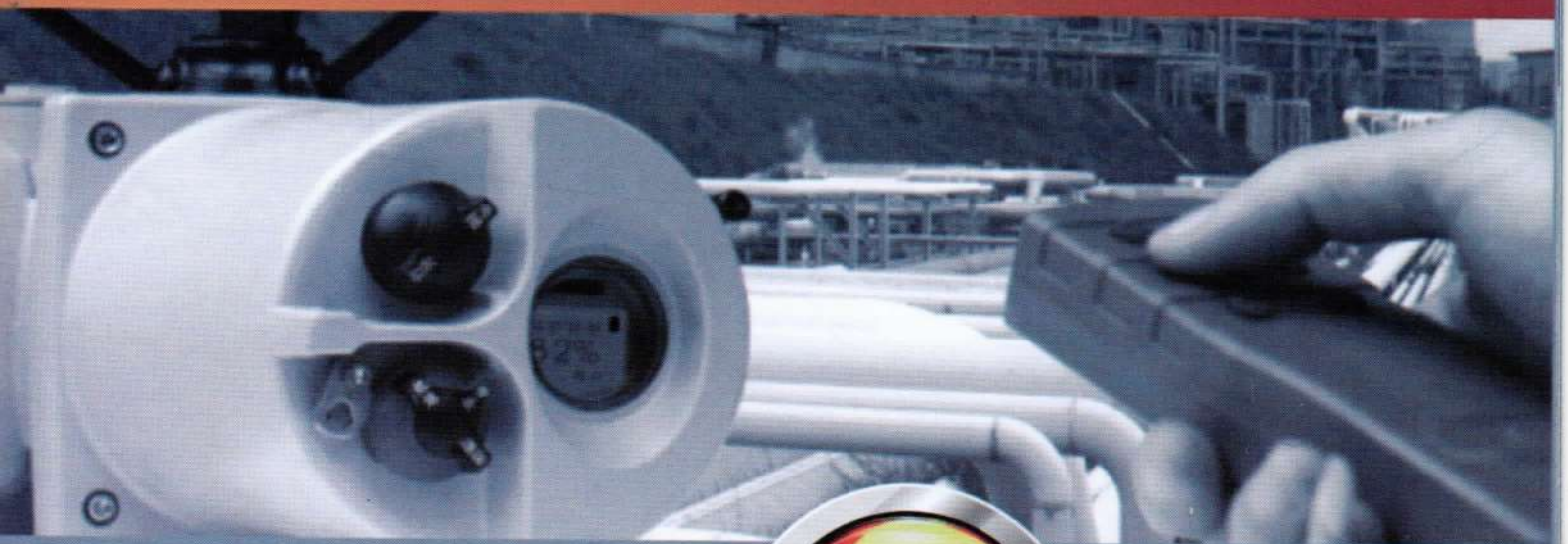


\* **Intelligent Electric Actuator**



**PT. MOV INDONESIA ABADI**  
SOLE AGENT FOR ACTUATOR & VALVES

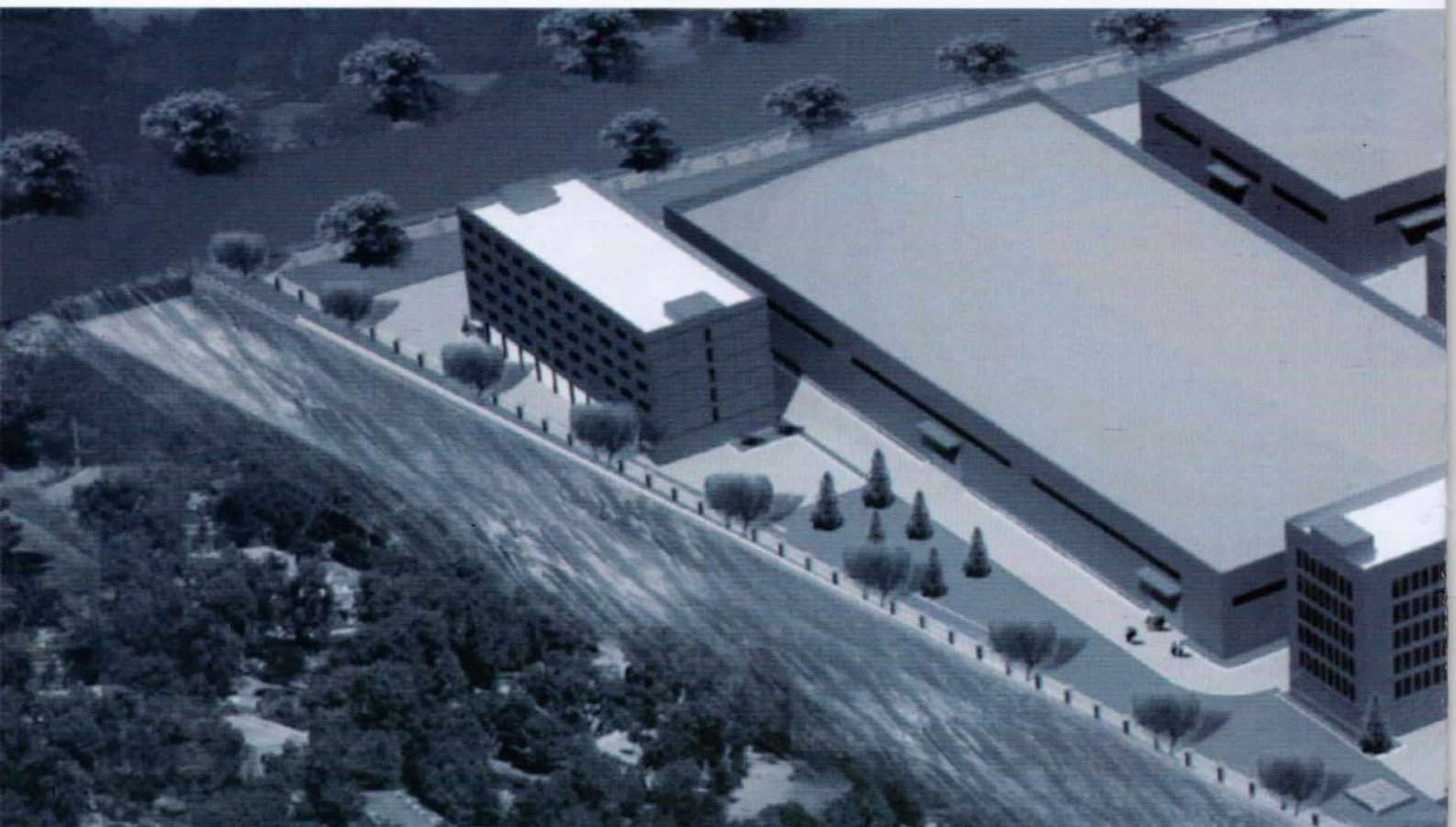


# About US

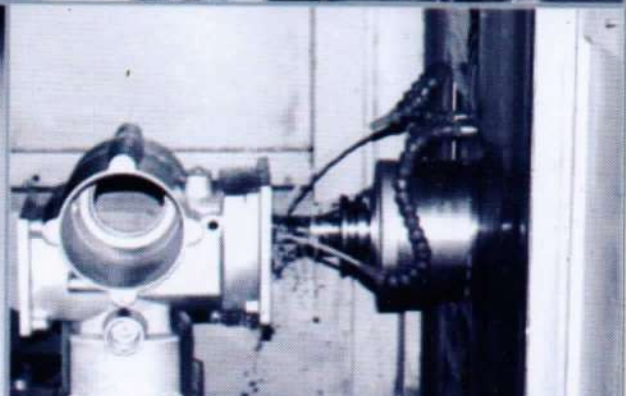
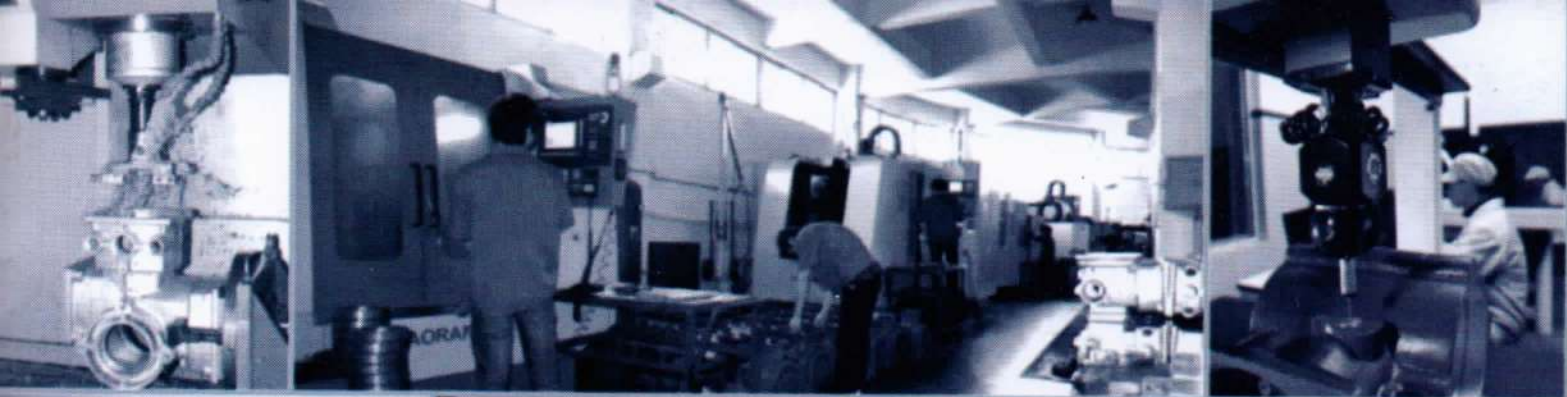
[www.movindonesia.com](http://www.movindonesia.com)

With an emphasis on supreme technology, the **MIA Science and Technology CO.,LTD** is a manufacturer of the intelligent electric actuator that focuses on research & development, production, sales and customer service. We have abundant technology strength, advanced manufacture technics, and perfect machining and test equipment. Our intelligent actuators are provided with excellent quality, high capability & low price and simple manipulation. In the all-over world actuator domain our product is in the one-up status. It is introduced into from the foreign techniques. By our abstraction and amelioration our electric actuator is excogitated. It is a supernal, pithy and top end intelligent product nowadays. It adopts the super large-scale integration, so it has powerful functions and steady performance. Our actuator has the LCD of the Chinese or English menu. It is the mechanical and electric integrative product assembled with intelligent, efficient and human performance.

Our company has the advanced machining equipments and a lot of professional persons with ability in automatization, instrumetation, machine design, motor design and so on. These offer powerful sustainment and guarantee for the quality and performance of the "**MIA**" electrical actuator. Our electric actuator is widely used in the domain of the power station, petroleum, paper-making, chemical plant, refinery, water disposal and so on.







# MIA

CREATS INTELLIGENT ELECTRIC ACTUATOR NEW ERA





## MAIN TECHNIQUE PARAMETERS

1.1 Input signals: 4mA~ 20mA: 1VDC~ 5VDC: 2mA~ 10mA: 0.5VDC~ 2.5VDC: 24VDC pulse or electrical level

1.2 Power supply:

| 3-phase AC current                |               | 1-phase AC current |               |
|-----------------------------------|---------------|--------------------|---------------|
| Voltages(V)                       | Frequency(Hz) | Voltages(V)        | Frequency(Hz) |
| 220; 230; 240; 380; 400; 415; 500 | 50            | 220-250            | 50            |
| 440; 460; 480                     | 60            | 110; 115; 120; 240 | 60            |

1.3 Basic error:  $\leq \pm 1.0\%$

1.4 Repeatability error:  $\leq 1\%$ (Range HKM, HKE, HKJM),  $\leq 3\%$ (Range HK, HKC, HKJ)

1.5 Deadband: 0.1%~ 9.9%(Range HKM, HKE, HKJM)

1.6 Ambient temperature:  $-40^{\circ}\text{C} \sim +70^{\circ}\text{C}$

1.7 Ambient humidity:  $\leq 95\%$

1.8 Insulation resistance:  $>50\text{M}\Omega$  between power supply terminals and main case;  $>50\text{M}\Omega$  between input terminals and main case;  $>50\text{M}\Omega$  between power supply terminals and input terminals

1.9 Insulation intensity: To the 380VAC power supply, there is no breakdown or flash-over when respectively affected 2000V/50Hz between input terminals and power supply terminals or 500V/50Hz between input terminals and main case over 60 seconds.

1.10 Infra-red setting tool accords with explosion proof sign: Exia II CT4

## MAIN CHARACTERS

- |  |  |
|--|--|
| (1) Non-intrusive design                                       | (12) Display valve position real time by the LCD     |
| (2) Non-intrusive debugging                                    | (13) Self diagnosis function                         |
| (3) Double sealed structure                                    | (14) Manipulation by the hand-wheel                  |
| (4) Torque protection  | (15) Explosion proof structure with Exd II CT4       |
| (5) Limit protection   | (16) Enclosure is IP68                               |
| (6) Lose phase protection                                      | (17) Low inertia and high torque motor with F degree |
| (7) Electronic latching protection                             | (18) Worm and turbine operates in an oil bath        |
| (8) Motor over temperature protection                          | (19) Standard drive interface                        |
| (9) Input and output channels with photoelectricity insulation | (20) Non-thrust bearing configuration                |
| (10) Detect valve position by Hoare switchs                    | (21) Accept voltage, current and pulse signals       |
| (11) Automatical phase order adjustment                        |  |

## Application



For detailed information, please refer to:

[Http://www.movindonesia.id](http://www.movindonesia.id), [www.movindonesia.com](http://www.movindonesia.com)



1.1.HKM/HKE Series Multi-tum Modulating Duty Actuator Performance Table (220VAC/50Hz 1-Ph)

| Output speed(rpm) |                         | 18   | 24   | 36   | 48   | 72   | 96 | 144 | 192 |
|-------------------|-------------------------|------|------|------|------|------|----|-----|-----|
| HKM03<br>HKE03    | Modulation torque N.m   | 12   | 12   | 10   | 10   |      |    |     |     |
|                   | Max torque N.m          | 24   | 24   | 21   | 20   |      |    |     |     |
|                   | Motor power kW          | 0.06 | 0.08 | 0.08 | 0.1  |      |    |     |     |
|                   | Locked rotor currency A | 6.5  | 7.3  | 7.3  | 7.9  |      |    |     |     |
|                   | Rated currency A        | 1.6  | 1.8  | 1.8  | 1.9  |      |    |     |     |
| HKM05<br>HKE05    | Modulation torque N.m   | 20   | 18   | 15   | 13   |      |    |     |     |
|                   | Max torque N.m          | 42   | 38   | 33   | 27   |      |    |     |     |
|                   | Motor power kW          | 0.12 | 0.12 | 0.12 | 0.12 |      |    |     |     |
|                   | Locked rotor currency A | 8.5  | 8.5  | 8.5  | 8.5  |      |    |     |     |
|                   | Rated currency A        | 2.0  | 2.0  | 2.0  | 2.0  |      |    |     |     |
| HKM10<br>HKE10    | Modulation torque N.m   | 40   | 32   | 26   | 25   | 18   |    |     |     |
|                   | Max torque N.m          | 85   | 77   | 58   | 55   | 38   |    |     |     |
|                   | Motor power kW          | 0.19 | 0.21 | 0.23 | 0.25 | 0.28 |    |     |     |
|                   | Locked rotor currency A | 9.5  | 10.2 | 11.6 | 13   | 14.1 |    |     |     |
|                   | Rated currency A        | 2.3  | 2.45 | 2.8  | 3.2  | 3.4  |    |     |     |
| HKM20<br>HKE20    | Modulation torque N.m   | 70   | 70   | 55   | 42   | 42   |    |     |     |
|                   | Max torque N.m          | 133  | 133  | 107  | 89   | 89   |    |     |     |
|                   | Motor power kW          | 0.28 | 0.35 | 0.32 | 0.35 | 0.37 |    |     |     |
|                   | Locked rotor currency A | 14.1 | 17.2 | 16.5 | 17.2 | 18.1 |    |     |     |
|                   | Rated currency A        | 3.4  | 3.72 | 3.6  | 3.75 | 3.9  |    |     |     |
| HKM55<br>HKE55    | Modulation torque N.m   | 180  | 150  | 130  | 102  | 72   |    |     |     |
|                   | Max torque N.m          | 343  | 328  | 265  | 204  | 142  |    |     |     |
|                   | Motor power kW          | 0.8  | 0.8  | 0.75 | 0.8  | 0.8  |    |     |     |
|                   | Locked rotor currency A | 36   | 36   | 32   | 36   | 36   |    |     |     |
|                   | Rated currency A        | 7.8  | 7.8  | 7    | 7.8  | 7.8  |    |     |     |

1.2.HKM/HKE Series Multi-tum Modulating Duty Actuator Performance Table (380VAC/50Hz 3-Ph)

| Output speed(rpm) |                         | 18    | 24    | 36   | 48   | 72    | 96 | 144 | 192 |
|-------------------|-------------------------|-------|-------|------|------|-------|----|-----|-----|
| HKM03<br>HKE03    | Modulation torque N.m   | 17    | 17    | 15.6 | 13.6 |       |    |     |     |
|                   | Max torque N.m          | 34    | 34    | 30   | 27   |       |    |     |     |
|                   | Motor power kW          | 0.07  | 0.07  | 0.13 | 0.14 |       |    |     |     |
|                   | Locked rotor currency A | 2.3   | 2.3   | 3.6  | 3.7  |       |    |     |     |
|                   | Rated currency A        | 0.75  | 0.75  | 1    | 1.1  |       |    |     |     |
| HKM05<br>HKE05    | Modulation torque N.m   | 34    | 34    | 30   | 27   |       |    |     |     |
|                   | Max torque N.m          | 61    | 54    | 54   | 48   |       |    |     |     |
|                   | Motor power kW          | 0.12  | 0.13  | 0.19 | 0.23 |       |    |     |     |
|                   | Locked rotor currency A | 2.7   | 3.6   | 4.7  | 6.4  |       |    |     |     |
|                   | Rated currency A        | 0.85  | 1.0   | 1.0  | 2.1  |       |    |     |     |
| HKM10<br>HKE10    | Modulation torque N.m   | 81    | 81    | 68   | 54   | 47    |    |     |     |
|                   | Max torque N.m          | 122   | 109   | 81   | 68   | 54    |    |     |     |
|                   | Motor power kW          | 0.3   | 0.3   | 0.35 | 0.35 | 0.47  |    |     |     |
|                   | Locked rotor currency A | 6.8   | 6.8   | 9.25 | 9.25 | 10.25 |    |     |     |
|                   | Rated currency A        | 2.3   | 2.3   | 2.8  | 2.8  | 3.6   |    |     |     |
| HKM20<br>HKE20    | Modulation torque N.m   | 152   | 152   | 129  | 102  | 102   |    |     |     |
|                   | Max torque N.m          | 204   | 204   | 163  | 136  | 136   |    |     |     |
|                   | Motor power kW          | 0.47  | 0.47  | 0.58 | 0.68 | 0.70  |    |     |     |
|                   | Locked rotor currency A | 10.25 | 10.25 | 13.4 | 16   | 16    |    |     |     |
|                   | Rated currency A        | 3.6   | 3.6   | 4.6  | 5.5  | 5.5   |    |     |     |



**1.2.HKM/HKE Series Multi-turn Modulating Duty Actuator Performance Table (380VAC/50Hz 3-Ph)**

| Output speed(rpm) |                        | 18  | 24   | 36   | 48   | 72   | 96 | 144 | 192 |
|-------------------|------------------------|-----|------|------|------|------|----|-----|-----|
| HKM55             | Modulation torque N.m  | 271 | 271  | 253  | 203  | 203  |    |     |     |
|                   | Max torque N.m         | 544 | 544  | 408  | 313  | 218  |    |     |     |
| HKE55             | Motor power kW         | 0.9 | 1.05 | 1.27 | 1.2  | 1.35 |    |     |     |
|                   | Locked rotor current A | 18  | 25   | 28   | 27.6 | 29   |    |     |     |
|                   | Rated current A        | 6   | 7    | 9    | 7.8  | 8.2  |    |     |     |

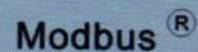
**2.1.HKML/HKEL Series Linear Actuator Performance Table (220VAC/50Hz 1-Ph)**

| Model  | Output speed(rpm)                     | 18    | 24    | 36    | 48    | 72    |
|--------|---------------------------------------|-------|-------|-------|-------|-------|
| HKML03 | Driving stem diameter/thread pitch mm | 26/3  |       |       |       |       |
|        | Max linear travel mm                  | 115   |       |       |       |       |
|        | Flange type (ISO 5210)                | F10   |       |       |       |       |
| HKEL03 | Modulation stroke KN                  | 6.50  | 6.50  | 5.42  | 5.42  |       |
|        | Linear speed mm/sec                   | 0.9   | 1.2   | 1.8   | 2.4   |       |
|        | Rated close stroke KN                 | 13.00 | 13.00 | 11.38 | 10.84 |       |
| HKML05 | Driving stem diameter/thread pitch mm | 26/3  |       |       |       |       |
|        | Max linear travel mm                  | 115   |       |       |       |       |
|        | Flange type (ISO 5210)                | F10   |       |       |       |       |
| HKEL05 | Modulation stroke KN                  | 10.84 | 9.76  | 8.13  | 7.05  |       |
|        | Linear speed mm/sec                   | 0.9   | 1.2   | 1.8   | 2.4   |       |
|        | Rated close stroke KN                 | 22.76 | 20.60 | 17.89 | 14.63 |       |
| HKML10 | Driving stem diameter/thread pitch mm | 32/6  |       |       |       |       |
|        | Max linear travel mm                  | 115   |       |       |       |       |
|        | Flange type (ISO 5210)                | F14   |       |       |       |       |
| HKEL10 | Modulation stroke KN                  | 15.37 | 12.29 | 9.99  | 9.60  | 6.91  |
|        | Linear speed mm/sec                   | 1.8   | 2.4   | 3.6   | 4.8   | 7.2   |
|        | Rated close stroke KN                 | 32.65 | 29.58 | 22.28 | 21.19 | 14.60 |
| HKML10 | Driving stem diameter/thread pitch mm | 38/14 |       |       |       |       |
|        | Max linear travel mm                  | 115   |       |       |       |       |
|        | Flange type (ISO 5210)                | F14   |       |       |       |       |
| HKEL10 | Modulation stroke KN                  | 9.34  | 7.47  | 6.07  | 5.84  | 4.20  |
|        | Linear speed mm/sec                   | 4.2   | 5.6   | 8.4   | 11.2  | 16.8  |
|        | Rated close stroke KN                 | 19.85 | 17.98 | 13.54 | 12.84 | 8.87  |
| HKML20 | Driving stem diameter/thread pitch mm | 32/6  |       |       |       |       |
|        | Max linear travel mm                  | 115   |       |       |       |       |
|        | Flange type (ISO 5210)                | F14   |       |       |       |       |
| HKEL20 | Modulation stroke KN                  | 26.89 | 26.89 | 21.13 | 16.13 | 16.13 |
|        | Linear speed mm/sec                   | 1.8   | 2.4   | 3.6   | 4.8   | 7.2   |
|        | Rated close stroke KN                 | 51.09 | 51.09 | 41.10 | 34.19 | 34.19 |
| HKML20 | Driving stem diameter/thread pitch mm | 38/14 |       |       |       |       |
|        | Max linear travel mm                  | 115   |       |       |       |       |
|        | Flange type (ISO 5210)                | F14   |       |       |       |       |
| HKEL20 | Modulation stroke KN                  | 16.35 | 16.34 | 12.84 | 9.81  | 9.81  |
|        | Linear speed mm/sec                   | 4.2   | 5.6   | 8.4   | 11.2  | 16.8  |
|        | Rated close stroke KN                 | 31.06 | 31.06 | 24.99 | 20.78 | 20.78 |



2.2.HKML/HKEL Series Linear Actuator Performance Table (380VAC/50Hz 3-Ph)

| Model            | Output speed(rpm)                     | 18    | 24    | 36    | 48    | 72    |
|------------------|---------------------------------------|-------|-------|-------|-------|-------|
| HKML03<br>HKEL03 | Driving stem diameter/thread pitch mm | 26/3  |       |       |       |       |
|                  | Max linear travel mm                  | 115   |       |       |       |       |
|                  | Flange type (ISO 5210)                | F10   |       |       |       |       |
|                  | Modulation stroke KN                  | 9.20  | 9.20  | 8.45  | 7.37  |       |
|                  | Linear speed mm/sec                   | 0.9   | 1.2   | 1.8   | 2.4   |       |
|                  | Rated close stroke KN                 | 18.43 | 18.43 | 16.26 | 14.63 |       |
| HKML05<br>HKEL05 | Driving stem diameter/thread pitch mm | 26/3  |       |       |       |       |
|                  | Max linear travel mm                  | 115   |       |       |       |       |
|                  | Flange type (ISO 5210)                | F10   |       |       |       |       |
|                  | Modulation stroke KN                  | 18.43 | 18.43 | 16.26 | 14.63 |       |
|                  | Linear speed mm/sec                   | 0.9   | 1.2   | 1.8   | 2.4   |       |
|                  | Rated close stroke KN                 | 33.06 | 29.27 | 29.27 | 26.02 |       |
| HKML10<br>HKEL10 | Driving stem diameter/thread pitch mm | 32/6  |       |       |       |       |
|                  | Max linear travel mm                  | 115   |       |       |       |       |
|                  | Flange type (ISO 5210)                | F14   |       |       |       |       |
|                  | Modulation stroke KN                  | 31.15 | 31.15 | 26.12 | 20.74 | 18.06 |
|                  | Linear speed mm/sec                   | 1.8   | 2.4   | 3.6   | 4.8   | 7.2   |
|                  | Rated close stroke KN                 | 46.87 | 41.87 | 31.15 | 26.12 | 20.74 |
| HKML10<br>HKEL10 | Driving stem diameter/thread pitch mm | 38/14 |       |       |       |       |
|                  | Max linear travel mm                  | 115   |       |       |       |       |
|                  | Flange type (ISO 5210)                | F14   |       |       |       |       |
|                  | Modulation stroke KN                  | 18.91 | 18.91 | 15.88 | 12.61 | 10.97 |
|                  | Linear speed mm/sec                   | 4.2   | 5.6   | 8.4   | 11.2  | 16.8  |
|                  | Rated close stroke KN                 | 28.49 | 25.45 | 18.91 | 15.88 | 12.61 |
| HKML20<br>HKEL20 | Driving stem diameter/thread pitch mm | 32/6  |       |       |       |       |
|                  | Max linear travel mm                  | 115   |       |       |       |       |
|                  | Flange type (ISO 5210)                | F14   |       |       |       |       |
|                  | Modulation stroke KN                  | 58.39 | 58.39 | 49.56 | 39.18 | 39.18 |
|                  | Linear speed mm/sec                   | 1.8   | 2.4   | 3.6   | 4.8   | 7.2   |
|                  | Rated close stroke KN                 | 78.37 | 78.37 | 62.62 | 52.25 | 52.25 |
| HKML20<br>HKEL20 | Driving stem diameter/thread pitch mm | 38/14 |       |       |       |       |
|                  | Max linear travel mm                  | 115   |       |       |       |       |
|                  | Flange type (ISO 5210)                | F14   |       |       |       |       |
|                  | Modulation stroke KN                  | 35.49 | 35.49 | 30.12 | 23.82 | 23.82 |
|                  | Linear speed mm/sec                   | 4.2   | 5.6   | 8.4   | 11.2  | 16.8  |
|                  | Rated close stroke KN                 | 47.64 | 47.64 | 38.06 | 31.76 | 31.76 |





3.1.HK/HKC Series Multi-turn ON-OFF Duty Actuator Performance Table (220VAC/50Hz 1-Ph)

| Output speed(rpm) |                         | 18   | 24   | 36   | 48   | 72   | 96 | 144 | 192 |
|-------------------|-------------------------|------|------|------|------|------|----|-----|-----|
| HK03              | Rated torque N.m        | 20   | 20   | 17   | 15   |      |    |     |     |
|                   | Motor power kW          | 0.08 | 0.08 | 0.08 | 0.08 |      |    |     |     |
| HKC03             | Locked rotor currency A | 7.3  | 7.3  | 7.3  | 7.3  |      |    |     |     |
|                   | Rated currency A        | 1.8  | 1.8  | 1.8  | 1.8  |      |    |     |     |
| HK08              | Rated torque N.m        | 24   | 24   | 20   | 17   |      |    |     |     |
|                   | Motor power kW          | 0.1  | 0.1  | 0.1  | 0.1  |      |    |     |     |
| HKC08             | Locked rotor currency A | 8.2  | 8.2  | 8.2  | 8.2  |      |    |     |     |
|                   | Rated currency A        | 2.1  | 2.1  | 2.1  | 2.1  |      |    |     |     |
| HK14              | Rated torque N.m        | 32   | 28   | 22   |      |      |    |     |     |
|                   | Motor power kW          | 0.12 | 0.12 | 0.12 |      |      |    |     |     |
| HKC14             | Locked rotor currency A | 8.8  | 8.8  | 8.8  |      |      |    |     |     |
|                   | Rated currency A        | 2.4  | 2.4  | 2.4  |      |      |    |     |     |
| HK20              | Rated torque N.m        | 81   | 81   | 81   | 63   | 63   |    |     |     |
|                   | Motor power kW          | 0.23 | 0.23 | 0.28 | 0.28 | 0.32 |    |     |     |
| HKC20             | Locked rotor currency A | 11.6 | 13   | 14.1 | 14.1 | 16.5 |    |     |     |
|                   | Rated currency A        | 2.8  | 3.2  | 3.4  | 3.4  | 3.6  |    |     |     |
| HK40              | Rated torque N.m        | 142  | 142  | 127  | 108  |      |    |     |     |
|                   | Motor power kW          | 0.35 | 0.37 | 0.37 | 0.37 |      |    |     |     |
| HKC40             | Locked rotor currency A | 17.2 | 18.1 | 18.1 | 18.1 |      |    |     |     |
|                   | Rated currency A        | 3.75 | 3.9  | 3.9  | 3.9  |      |    |     |     |
| HK60              | Rated torque N.m        | 252  | 232  | 184  | 147  | 109  |    |     |     |
|                   | Motor power kW          | 0.8  | 0.8  | 0.75 | 0.8  | 0.8  |    |     |     |
| HKC60             | Locked rotor currency A | 36   | 36   | 32   | 36   | 36   |    |     |     |
|                   | Rated currency A        | 7.8  | 7.8  | 7    | 7.8  | 7.8  |    |     |     |

3.2.HK/HKC Series Multi-turn ON-OFF Duty Actuator Performance Table (380VAC/50Hz 3-Ph)

| Output speed(rpm) |                         | 18   | 24   | 36    | 48   | 72   | 96   | 144  | 192 |
|-------------------|-------------------------|------|------|-------|------|------|------|------|-----|
| HK03              | Rated torque N.m        | 34   | 34   | 34    | 34   | 34   | 34   |      |     |
|                   | Motor power kW          | 0.05 | 0.05 | 0.07  | 0.10 | 0.13 | 0.17 |      |     |
| HKC03             | Locked rotor currency A | 1.4  | 1.8  | 2.3   | 3    | 3.6  | 3.6  |      |     |
|                   | Rated currency A        | 0.45 | 0.6  | 0.75  | 1    | 1    | 1.3  |      |     |
| HK08              | Rated torque N.m        | 81   | 81   | 81    | 81   | 61   | 47   |      |     |
|                   | Motor power kW          | 0.12 | 0.14 | 0.19  | 0.23 | 0.24 | 0.24 |      |     |
| HKC08             | Locked rotor currency A | 2.7  | 3.7  | 4.7   | 6.4  | 6.4  | 6.4  |      |     |
|                   | Rated currency A        | 0.85 | 1.1  | 1.5   | 2.1  | 2.1  | 2.1  |      |     |
| HK14              | Rated torque N.m        | 108  | 136  | 102   |      |      |      |      |     |
|                   | Motor power kW          | 0.15 | 0.23 | 0.23  |      |      |      |      |     |
| HKC14             | Locked rotor currency A | 3.7  | 6.4  | 6.4   |      |      |      |      |     |
|                   | Rated currency A        | 1.1  | 2.1  | 2.1   |      |      |      |      |     |
| HK20              | Rated torque N.m        | 203  | 203  | 203   | 203  | 176  | 142  | 120  |     |
|                   | Motor power kW          | 0.30 | 0.35 | 0.47  | 0.58 | 0.70 | 0.70 | 0.72 |     |
| HKC20             | Locked rotor currency A | 6.8  | 9.25 | 10.25 | 13.4 | 16   | 16   | 16.5 |     |
|                   | Rated currency A        | 2.3  | 2.8  | 3.6   | 4.6  | 5.5  | 5.5  | 5.6  |     |
| HK30              | Rated torque N.m        | 350  | 300  | 250   |      |      |      |      |     |
|                   | Motor power kW          | 0.55 | 0.55 | 0.58  |      |      |      |      |     |
| HKC30             | Locked rotor currency A | 12.5 | 12.5 | 13.4  |      |      |      |      |     |
|                   | Rated currency A        | 4.3  | 4.3  | 4.6   |      |      |      |      |     |



3.2.HK/HKC Series Multi-turn ON-OFF Duty Actuator Performance Table (380VAC/50Hz 3-Ph)

| Output speed(rpm) |                         | 18   | 24   | 36   | 48   | 72   | 96   | 144  | 192  |
|-------------------|-------------------------|------|------|------|------|------|------|------|------|
| HK40<br>HKC40     | Rated torque N.m        | 400  | 400  | 298  | 244  |      |      |      |      |
|                   | Motor power kW          | 0.58 | 0.68 | 0.68 | 0.68 |      |      |      |      |
|                   | Locked rotor currency A | 13.4 | 16   | 16   | 16   |      |      |      |      |
|                   | Rated currency A        | 406  | 5.5  | 5.5  | 5.5  |      |      |      |      |
| HK60<br>HKC60     | Rated torque N.m        | 610  | 610  | 542  | 474  | 474  | 366  | 275  |      |
|                   | Motor power kW          | 0.90 | 1.05 | 1.27 | 1.35 | 1.90 | 1.80 | 2.00 |      |
|                   | Locked rotor currency A | 18   | 25   | 28   | 29   | 41   | 37   | 43   |      |
|                   | Rated currency A        | 6    | 7    | 9    | 8.2  | 12.5 | 12   | 13   |      |
| HK100<br>HKC100   | Rated torque N.m        | 1020 | 1020 | 845  | 680  | 680  | 542  | 406  |      |
|                   | Motor power kW          | 2.10 | 2.10 | 2.10 | 3.7  | 3.7  | 3.7  | 3.7  |      |
|                   | Locked rotor currency A | 45   | 45   | 45   | 61   | 61   | 61   | 61   |      |
|                   | Rated currency A        | 11   | 11   | 11   | 16.5 | 16.5 | 16.5 | 16.5 |      |
| Hk150<br>HKC150   | Rated torque N.m        | 1490 | 1490 | 1290 | 1020 | 1020 | 745  | 645  | 542  |
|                   | Motor power kW          | 2.75 | 2.75 | 4.80 | 4.80 | 4.80 | 480  | 4.80 | 4.80 |
|                   | Locked rotor currency A | 61   | 61   | 95   | 95   | 95   | 95   | 95   | 95   |
|                   | Rated currency A        | 15   | 15   | 25   | 25   | 25   | 25   | 25   | 25   |
| HK200<br>HKC200   | Rated torque N.m        | 2030 | 2030 | 1700 | 1355 | 1355 | 1020 | 865  | 730  |
|                   | Motor power kW          | 4.5  | 4.5  | 4.5  | 7.5  | 7.5  | 7.5  | 3.5  | 7.5  |
|                   | Locked rotor currency A | 78   | 78   | 78   | 138  | 138  | 138  | 138  | 138  |
|                   | Rated currency A        | 21   | 21   | 21   | 35   | 35   | 35   | 35   | 35   |
| HK201<br>HKC201   | Rated torque N.m        |      |      |      |      |      |      | 1355 | 1355 |
|                   | Motor power kW          |      |      |      |      |      |      | 10.2 | 13   |
|                   | Locked rotor currency A |      |      |      |      |      |      | 218  | 218  |
|                   | Rated currency A        |      |      |      |      |      |      | 88   | 88   |
| HK300<br>HKC300   | Rated torque N.m        |      | 3000 |      |      |      |      |      |      |
|                   | Motor power kW          |      | 4.8  |      |      |      |      |      |      |
|                   | Locked rotor currency A |      | 78   |      |      |      |      |      |      |
|                   | Rated currency A        |      | 22   |      |      |      |      |      |      |

4.1 Part-turn Actuator Performance Table (220VAC/50Hz 1-Ph)

4.1.1 HKJ Series ON-OFF Duty Actuator

| Model  | Max output torque | Rated torque | Travel time | Max stem of valve | Motor power | Rated currency | Hand wheel number | Weight |
|--------|-------------------|--------------|-------------|-------------------|-------------|----------------|-------------------|--------|
|        | N.m               | N.m          | s           | mm                | W           | A              | n                 | kg     |
| HKJ06  | 60                | 50           | 17          | 22                | 15          | 0.53           | 8.5               | 11     |
| HKJ09  | 90                | 75           | 17          | 22                | 25          | 0.60           | 8.5               | 11     |
| HKJ15  | 150               | 125          | 20          | 22                | 40          | 0.80           | 10                | 12     |
| HKJ19  | 190               | 160          | 20          | 22                | 45          | 1.10           | 10                | 13     |
| HKJ28  | 280               | 235          | 25          | 32                | 50          | 1.20           | 12.5              | 17     |
| HKJ38  | 380               | 320          | 25          | 32                | 60          | 1.40           | 12.5              | 18     |
| HKJ50  | 500               | 420          | 25          | 32                | 90          | 1.70           | 12.5              | 19     |
| HKJ60  | 600               | 500          | 29          | 42                | 90          | 1.70           | 14.5              | 22     |
| HKJ80  | 800               | 670          | 29          | 42                | 140         | 2.00           | 14.5              | 23     |
| HKJ100 | 1000              | 840          | 29          | 42                | 180         | 2.40           | 14.5              | 25     |
| HKJ150 | 1500              | 1250         | 87          | 75                | 90          | 1.70           | 43.5              | 68     |
| HKJ200 | 2000              | 1670         | 87          | 75                | 140         | 2.00           | 43.5              | 70     |
| HKJ250 | 2500              | 2100         | 87          | 75                | 180         | 2.40           | 43.5              | 70     |



#### 4.1.2 HKJM Series Modulating Duty Actuator

| Model   | Max output torque | Modulation torque | Travel time | Max stem of valve | Motor power | Rated currency | Hand wheel number | Weight |
|---------|-------------------|-------------------|-------------|-------------------|-------------|----------------|-------------------|--------|
|         | N.m               | N.m               | s           | mm                | W           | A              | n                 | kg     |
| HKJM06  | 50                | 25                | 17          | 22                | 15          | 0.45           | 8.5               | 11     |
| HKJM09  | 80                | 40                | 17          | 22                | 25          | 0.58           | 8.5               | 11     |
| HKJM15  | 130               | 70                | 20          | 22                | 40          | 0.95           | 10                | 12     |
| HKJM19  | 160               | 85                | 20          | 22                | 45          | 0.95           | 10                | 13     |
| HKJM28  | 260               | 130               | 25          | 32                | 50          | 0.95           | 12.5              | 17     |
| HKJM38  | 350               | 175               | 25          | 32                | 60          | 1.30           | 12.5              | 18     |
| HKJM50  | 420               | 230               | 25          | 32                | 90          | 1.50           | 12.5              | 19     |
| HKJM60  | 520               | 270               | 29          | 42                | 90          | 1.50           | 14.5              | 22     |
| HKJM80  | 700               | 360               | 29          | 42                | 140         | 2.15           | 14.5              | 23     |
| HKJM100 | 880               | 450               | 29          | 42                | 180         | 2.45           | 14.5              | 25     |
| HKJM150 | 1350              | 720               | 87          | 75                | 90          | 1.50           | 43.5              | 68     |
| HKJM200 | 1800              | 950               | 87          | 75                | 140         | 2.15           | 43.5              | 70     |
| HKJM250 | 2300              | 1100              | 87          | 75                | 180         | 2.45           | 43.5              | 70     |

Notice: The motor starting currency of HKJ, HKJM actuator is around two times of rated currency .  
HKJM 's max torque is around 1.2times of rated torque.

#### 4.2 Part-turn Actuator Performance Table (380VAC/50Hz 3-Ph)

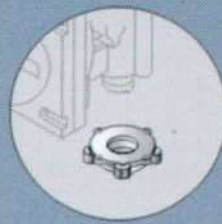
| Model       | Max output torque | Modulation torque | Travel time | Max stem of valve | Motor power | Rated currency | Hand wheel number | Weight |
|-------------|-------------------|-------------------|-------------|-------------------|-------------|----------------|-------------------|--------|
|             | N.m               | N.m               | s           | mm                | W           | A              | n                 | kg     |
| HKJ/HKJM06  | 60                | 50                | 17          | 22                | 15          | 0.25           | 8.5               | 11     |
| HKJ/HKJM09  | 90                | 75                | 17          | 22                | 25          | 0.28           | 8.5               | 11     |
| HKJ/HKJM15  | 150               | 125               | 20          | 22                | 40          | 0.39           | 10                | 12     |
| HKJ/HKJM19  | 190               | 160               | 20          | 22                | 45          | 0.50           | 10                | 13     |
| HKJ/HKJM28  | 280               | 235               | 25          | 32                | 50          | 0.40           | 12.5              | 17     |
| HKJ/HKJM38  | 380               | 320               | 25          | 32                | 60          | 0.45           | 12.5              | 18     |
| HKJ/HKJM50  | 500               | 420               | 25          | 32                | 90          | 0.73           | 12.5              | 19     |
| HKJ/HKJM60  | 600               | 500               | 29          | 42                | 90          | 0.73           | 14.5              | 22     |
| HKJ/HKJM80  | 800               | 670               | 29          | 42                | 140         | 0.80           | 14.5              | 23     |
| HKJ/HKJM100 | 1000              | 840               | 29          | 42                | 180         | 0.98           | 14.5              | 25     |
| HKJ/HKJM150 | 1500              | 1250              | 87          | 75                | 90          | 0.73           | 43.5              | 68     |
| HKJ/HKJM200 | 2000              | 1670              | 87          | 75                | 140         | 0.80           | 43.5              | 70     |
| HKJ/HKJM250 | 2500              | 2100              | 87          | 75                | 180         | 0.98           | 43.5              | 70     |

Notice: The motor starting currency of HKJ, HKJM actuator is around two times of rated currency .  
HKJM 's max torque is around 1.2times of rated torque.

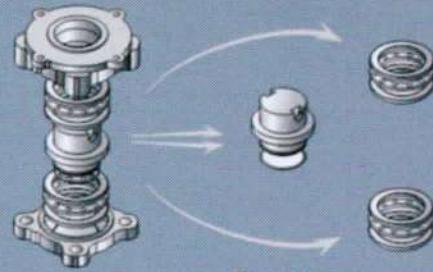




# HKM/HK/HKC/HKE Drive connection



Disassemble base



Thrust type

There are two kinds of base for HK/HKM actuator. Hk100, Hk150, Hk200, HK201 and HK300 are integral type. HKM03, HKM05, HKM10, HKM20, HKM55 are disassemble type.

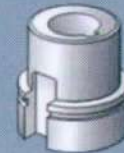
These two kinds of base are including flange and driving bush that comply with ISO 5210 or MSS SP-102 standard.



Non-thrust type disassemble base



B1 type



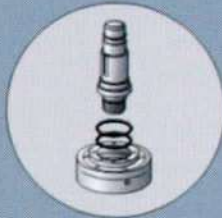
B3 type



B4 type

Non-thrust type

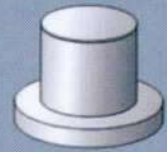
Drive bush can be machined according to stem of valve so that simplify the connection with valve and easy to disassembly. The design of base and drive bush of HK/HKM comply with ISO5211 or MSS SP-101 standard.



Non-thrust type undetachable base



B3 type



B4 type

Non-thrust type

B3 suitable for HK100-HK250 HKC100-HKC250 actuator with fixed shaft hole, the hole and key way are comply with ISO5210 standard.  
B4 suitable for HK100-HK250 actuator without shaft hole, which need to be machined by user.

## Model—interface dimensions table.

| Actuator model                                      | HKC 03-14<br>HK 03-14<br>HKM 03-05 | HKC 20-40<br>HK 20-40<br>HKM 10-20 | HKC 60<br>HK 60<br>HKM 55 | HKC 100<br>HK 100 | HKC 150<br>HK 150 | HKC 200<br>HK 200 | HKC 250<br>HK 250 | HKC 300<br>HK 300 |
|---|------------------------------------|------------------------------------|---------------------------|-------------------|-------------------|-------------------|-------------------|-------------------|
| <b>A type interface(thrust type) rated thrust .</b> |                                    |                                    |                           |                   |                   |                   |                   |                   |
| Rated thrust  | 44                                 | 100                                | 150                       | 220               | 220               | 334               | -                 | 445               |
| rising stem(max)                                    | 32                                 | 51                                 | 67                        | 73                | 83                | 83                | -                 | 83                |
| hiding stem(max)                                    | 26                                 | 38                                 | 51                        | 57                | 73                | 73                | -                 | 73                |
| <b>B type interface(non-thrust) rated thrust</b>    |                                    |                                    |                           |                   |                   |                   |                   |                   |
| B1 type(fixed hole) mm                              | 42                                 | 60                                 | 80                        | -                 | -                 | -                 | -                 | -                 |
| B3 type(fixed hole) mm                              | 20                                 | 30                                 | 40                        | 50                | 50                | 50                | 50                | -                 |
| B4 type(max) mm                                     | 20                                 | 30                                 | 44                        | 50                | 60                | 60                | 60                | -                 |
| Hand wheel ratio                                    | Direct                             | Direct                             | Direct                    | Direct            | 60:1              | 60:1              | 60:1              | 60:1              |
| Standard type                                       | -                                  | -                                  | -                         | 15:1              | 180:1             | 180:1             | 180:1             | 180:1             |
| Choice type   | -                                  | -                                  | -                         | 60:1              | 15:1              | 15:1              | 15:1              | 15:1              |
| Flange sizes  | F10                                | F14                                | F16                       | F25               | F25               | F30*              | F25               | F30               |
| Net weight (kg)                                     | 33                                 | 55                                 | 80                        | 235               | 258               | 258               | 238               | 258               |





HK / HKM WITH PART-TURN GEARBOX



HKJ / HKJM PART-TURN



HK / HKM MULTI-TURN



HK / HKM WITH DOUBLE-STAGE GEARBOX



HKML / HKEL LINEAR



GEARBOX

**Head Office :**

Jl. Alfa VI / 165  
Cimone Permai - Tangerang

Phone : 021 558 9634-43  
Mobile: 0817 6564 122, 0815 8498 4122  
0812 9119 1059 (WA)  
email : [movindonesiaabadi@yahoo.com](mailto:movindonesiaabadi@yahoo.com)  
[agustinuswira95@gmail.com](mailto:agustinuswira95@gmail.com)

Website : [www.movindonesia.id](http://www.movindonesia.id)  
[www.movindonesia.com](http://www.movindonesia.com)